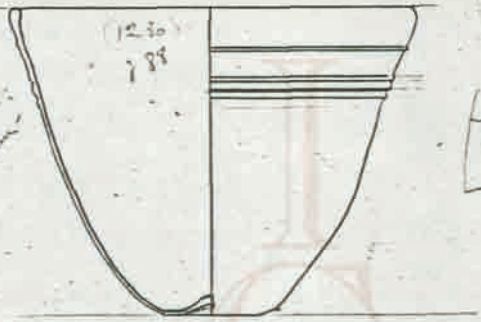


Amoris

Plus
moins
de la ligne

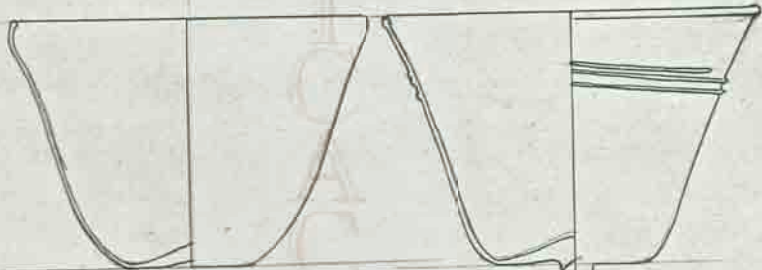
(1230)
788



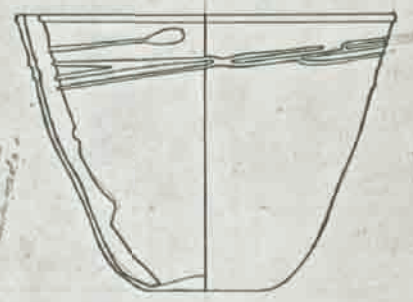
Hornillos



Laundry



HORNILLO



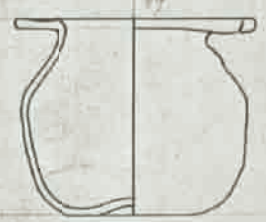
10



16

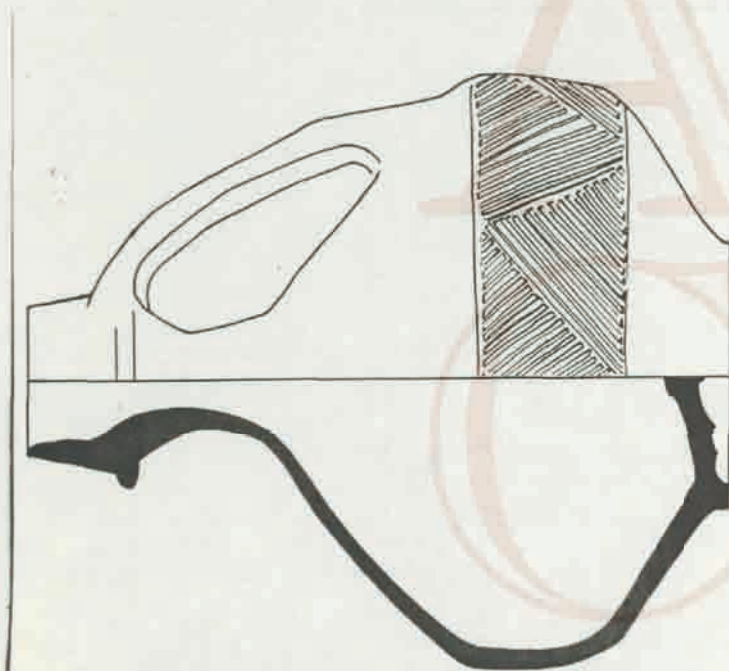
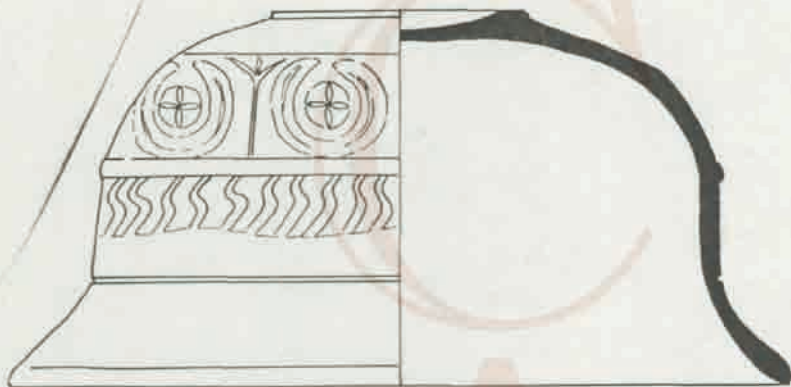


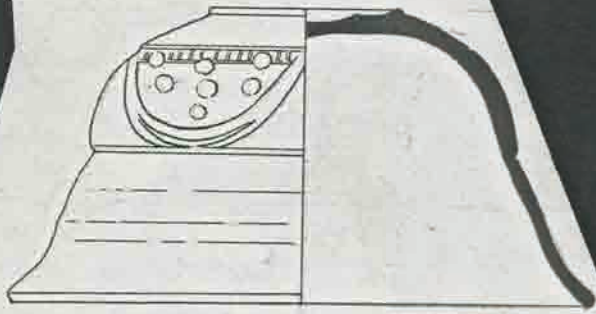
17



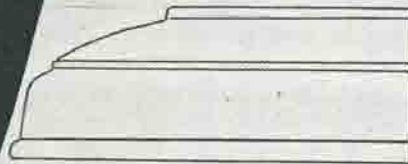
Large, faint, vertical text on the left side of the page, possibly a watermark or bleed-through from the reverse side. The characters are 'HORNILLO'.

SIMANCA





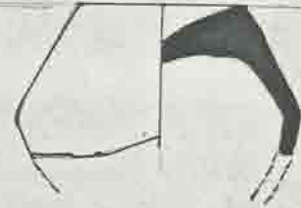
1892



1892

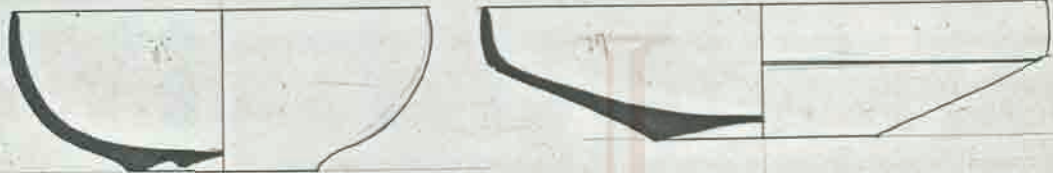


1892



1892

by *[signature]*



la nery

C
A
C

LA NUEZ DE ABAJO
BURGOS

1052



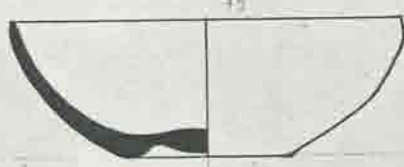
aferronada con
3 p. de cada lado
cuando se
supl.



78

Shells

79



79 (2)

Shells (Amalgam shell)



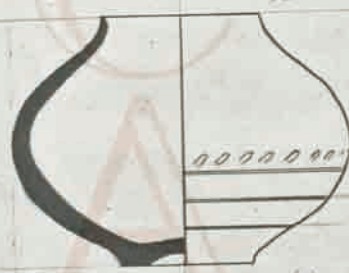
79 (3)

Shells



79

Shells



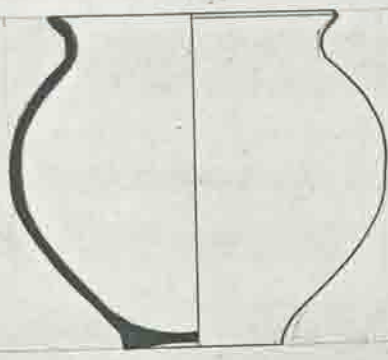
79

Shells



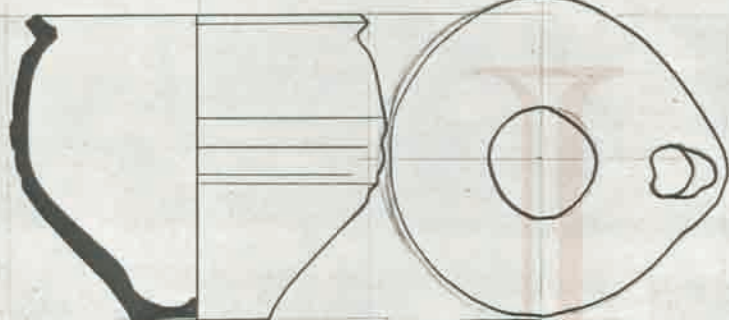
79

Shells



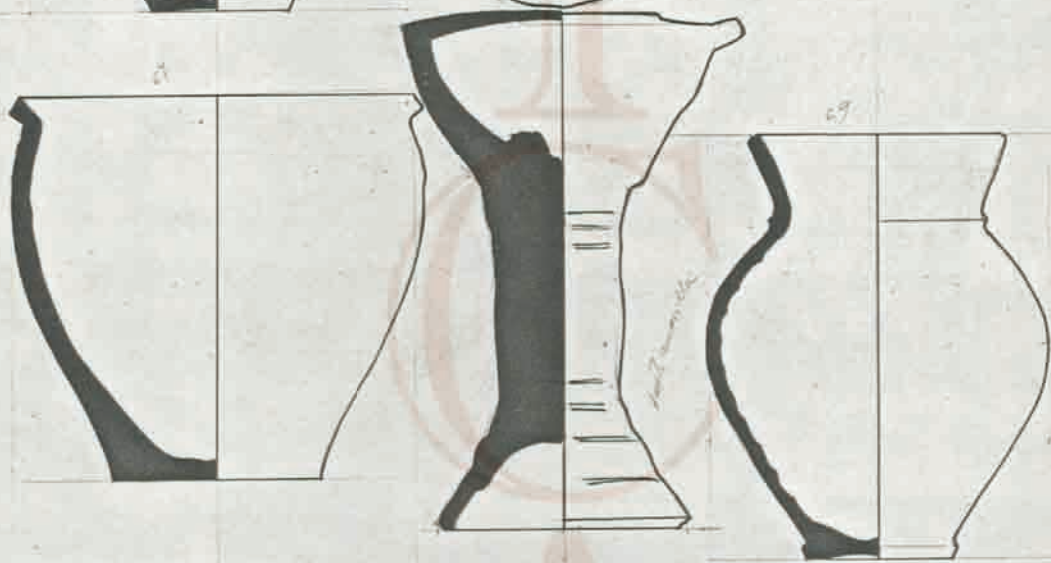
Hemmings.

*Reddish-brown
glaze*



1852

White glaze

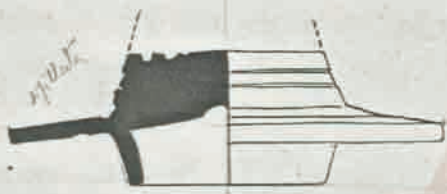


67

69

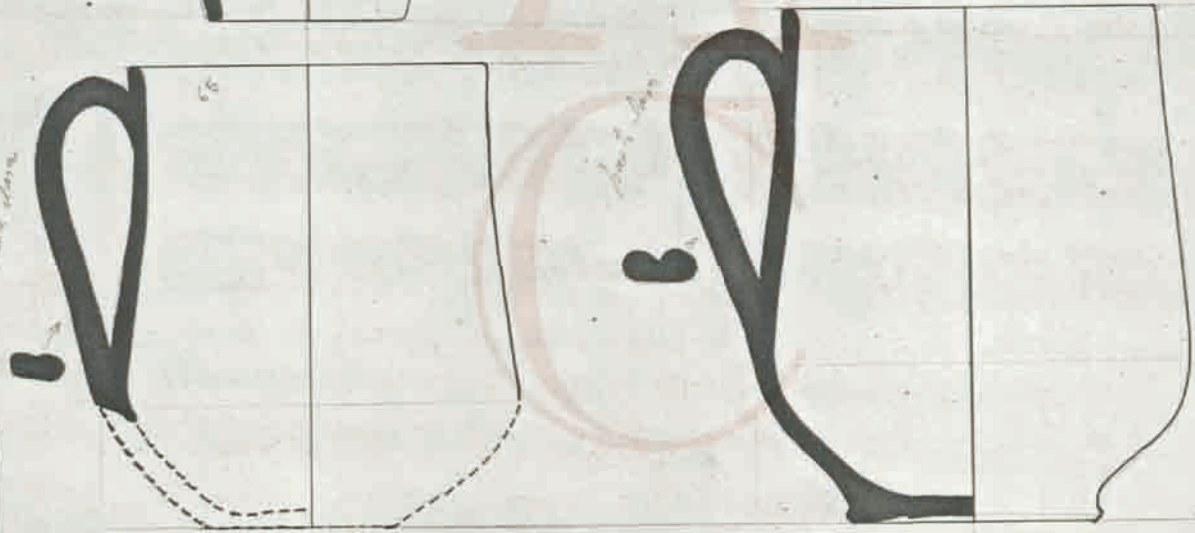
White glaze

White glaze



64

White glaze

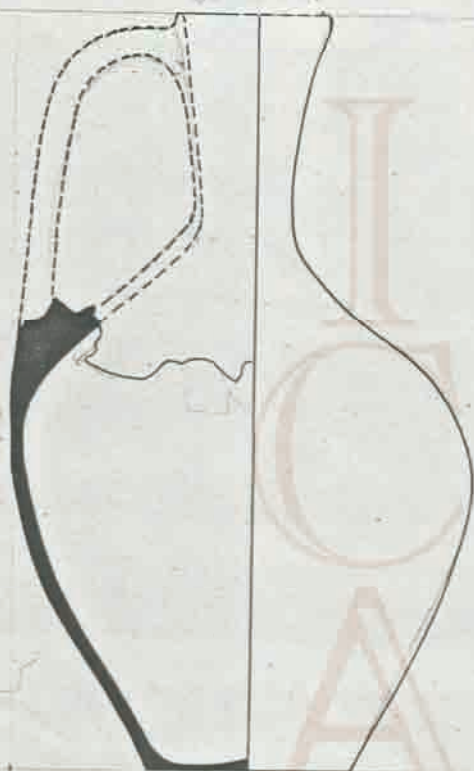


65

White glaze

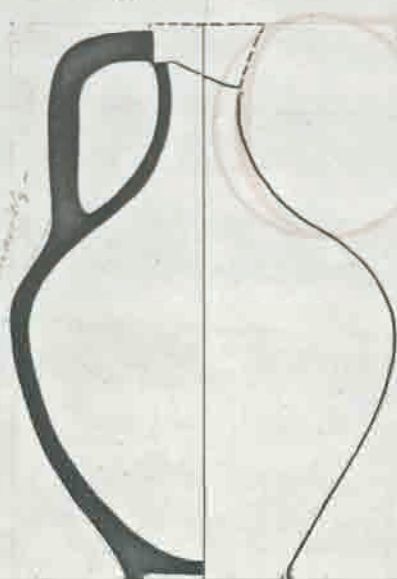
Howells

62



Small vertical text on the left margin, possibly a reference or note.

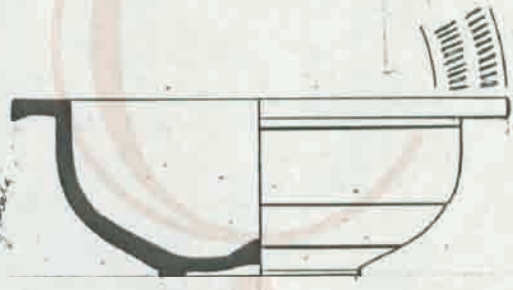
63



Small vertical text on the left margin, possibly a reference or note.

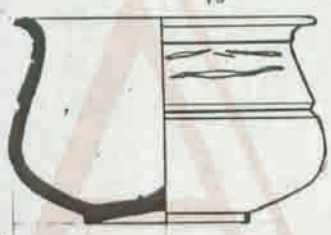
Assemblage all
Caninus

Montagna
S. Maria



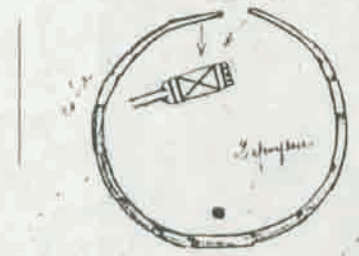
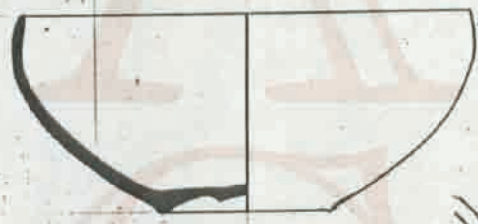
75

47-46-6

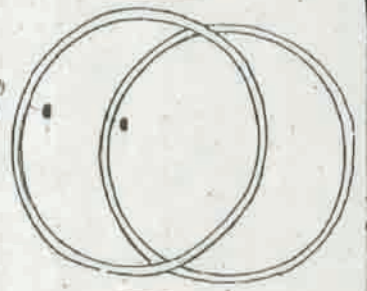


47A

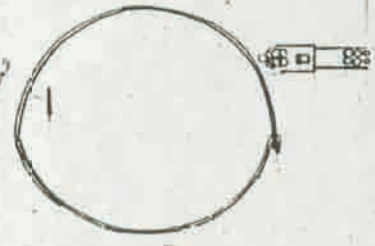
47-46-6



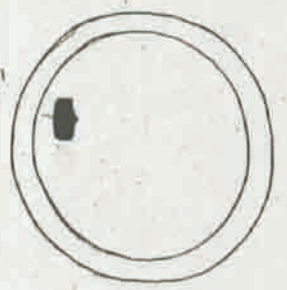
47-46-6



47-46-6

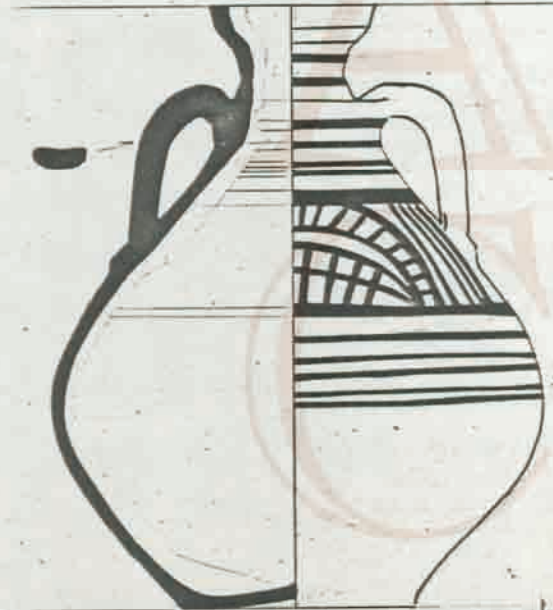
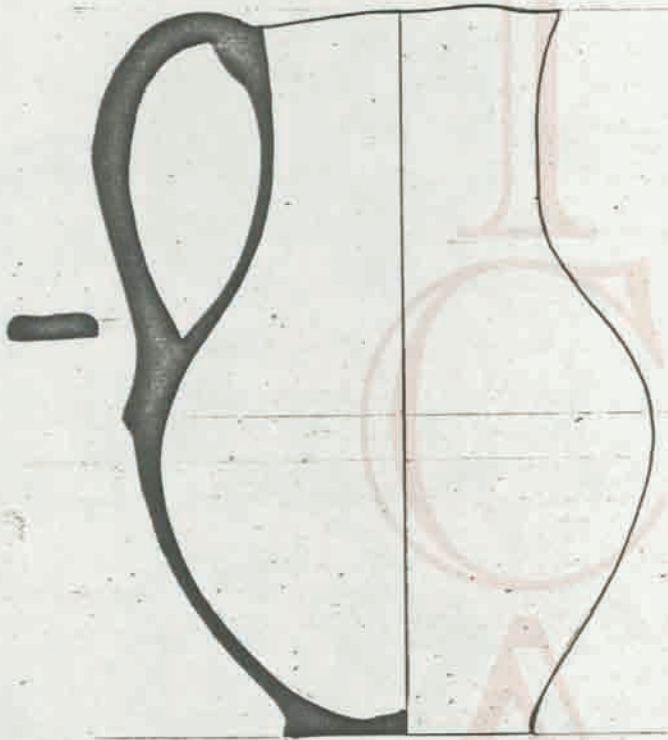


47-46-6

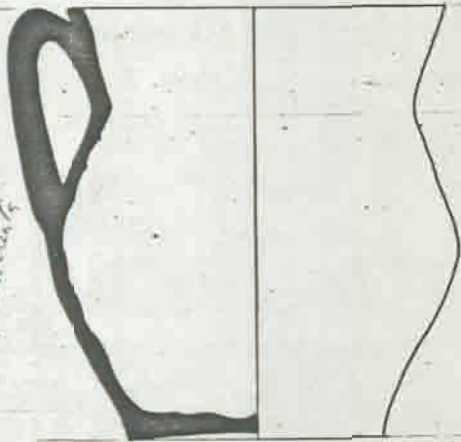


Itanilles

50

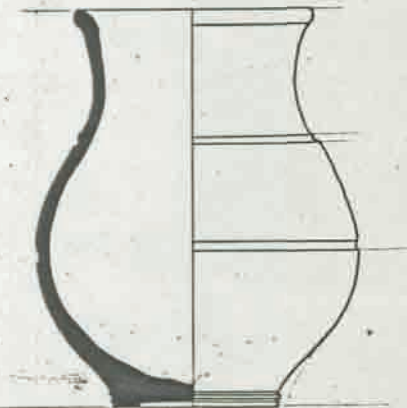


50



base of another clay jar

50



base of a jar

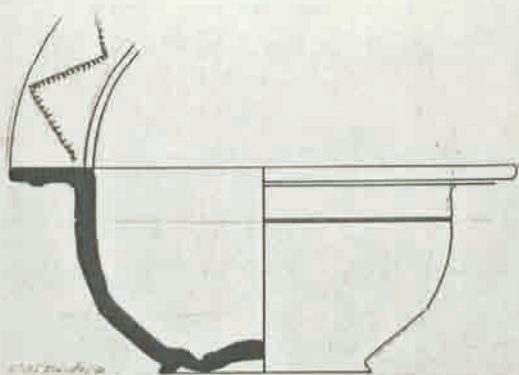
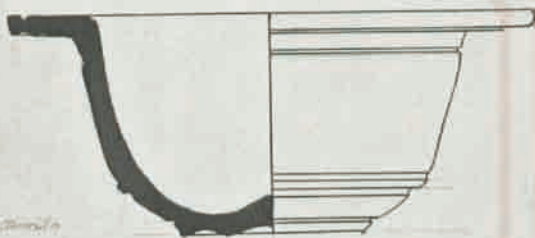
50



base of another clay jar

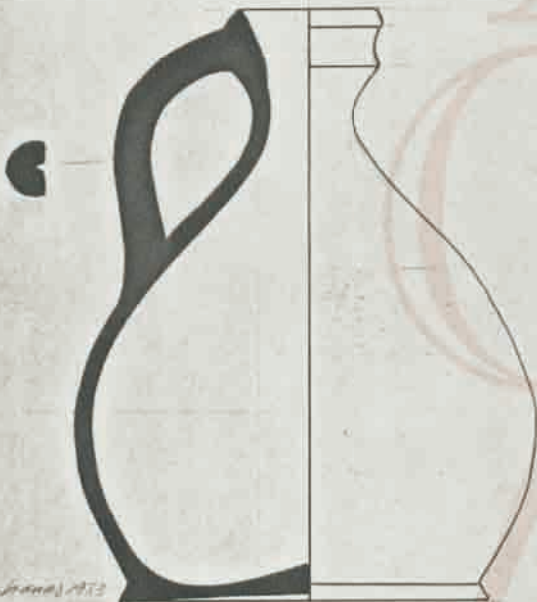
50





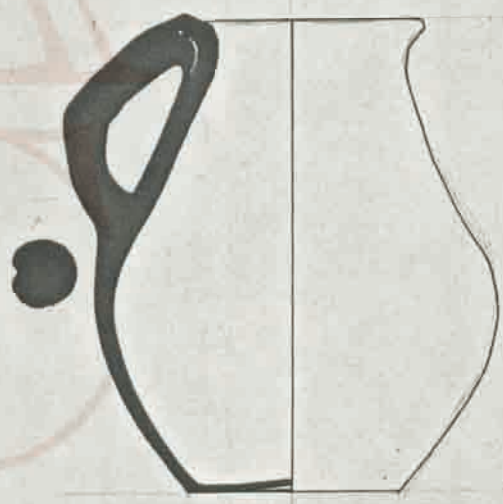
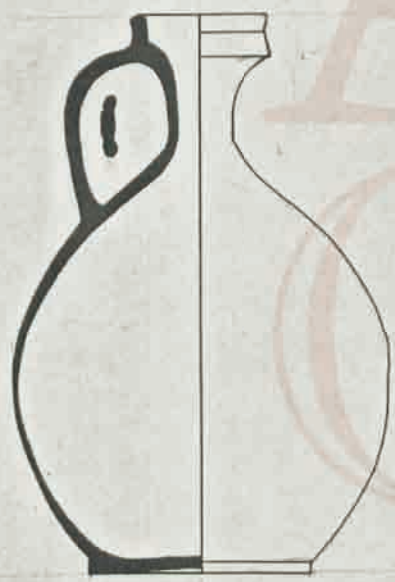
Merchancas

Merchancas



Merchancas 1953
2.º mod.

Merchancas
5.º mod.



Merchancas 1950
2.º mod.

Merchancas 3.º mod.

1/2 nat.

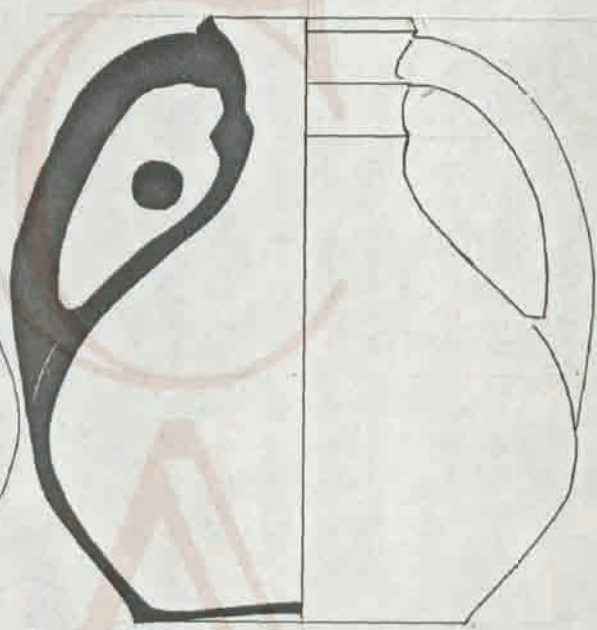
LAS MERCHANAS
(Salamanca)



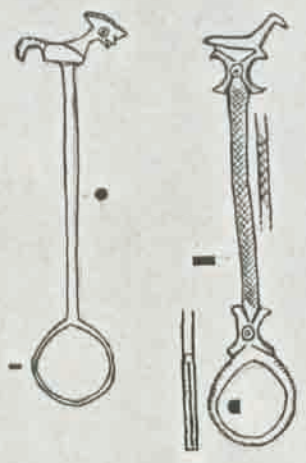
Merchanas 5:18.



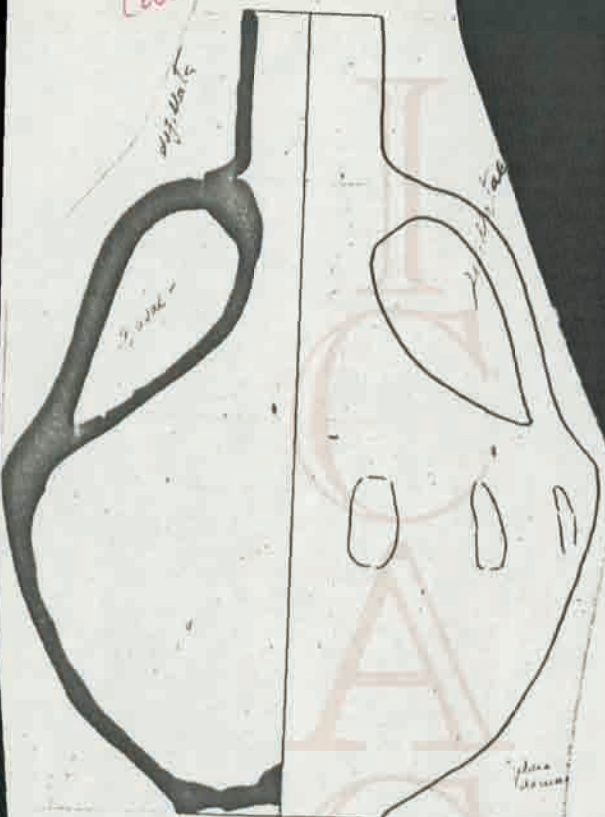
Merchanas 5:20 P.



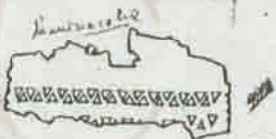
Merchanas 5:25 -



Hon in Russell
Campus



Wig. Ma. Ka



Wig. Ma. Ka



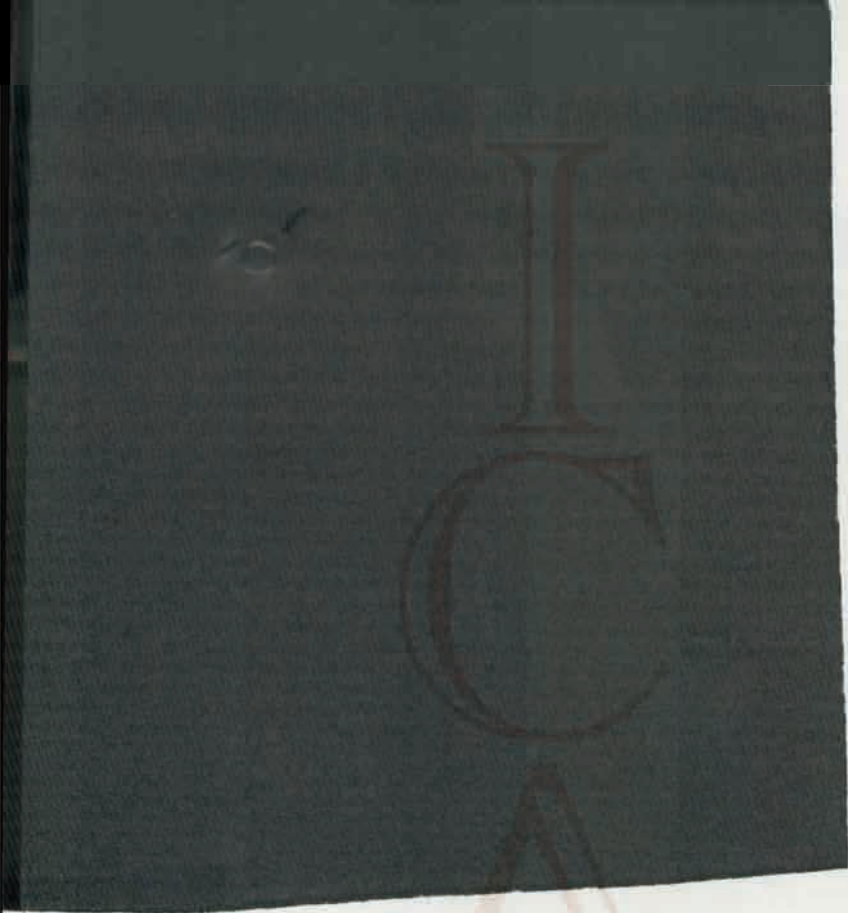
Wig. Ma. Ka



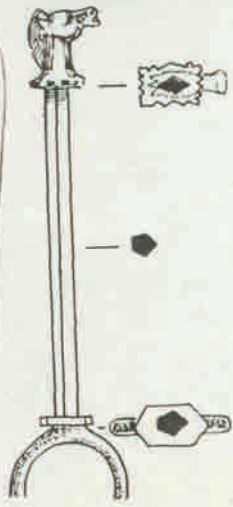
Wig. Ma. Ka

Wig. Ma. Ka

g. B

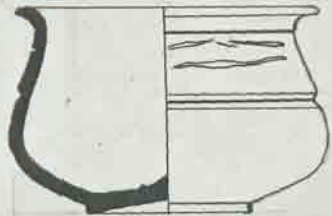


Simancan



Amurillo
Cauda

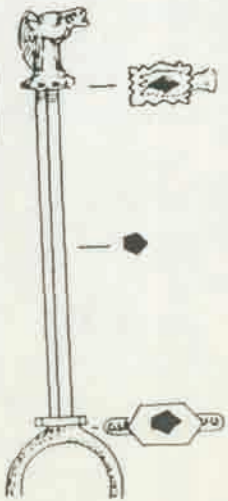
Spindel





(B)

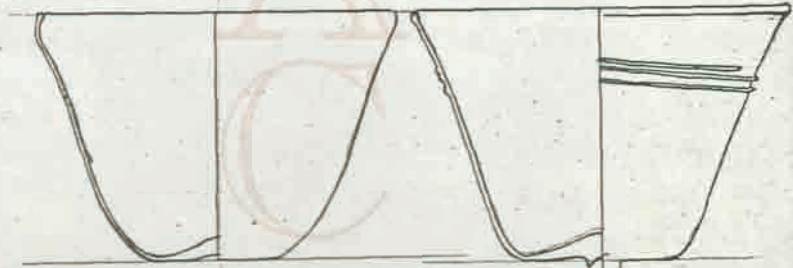
Simons



La may walyi

1090

1091



HORNILLO

reducción
aw



90

reducción
a 1/2



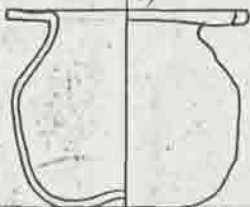
16

reducción
a 1/2

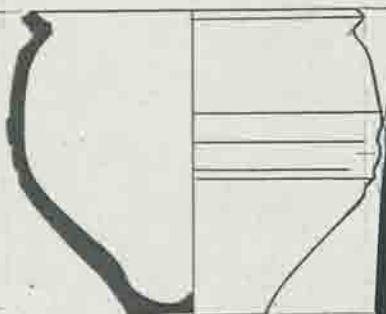


89

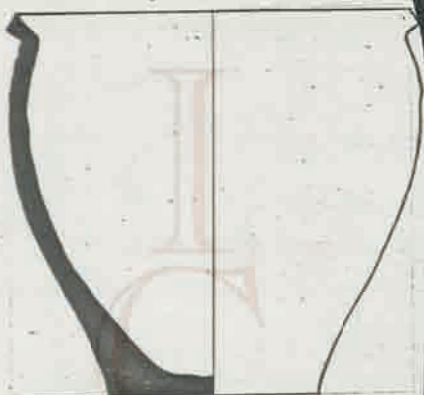
reducción
a 1/2



167
Diferencia de
la primera



168
Diferencia de
la primera

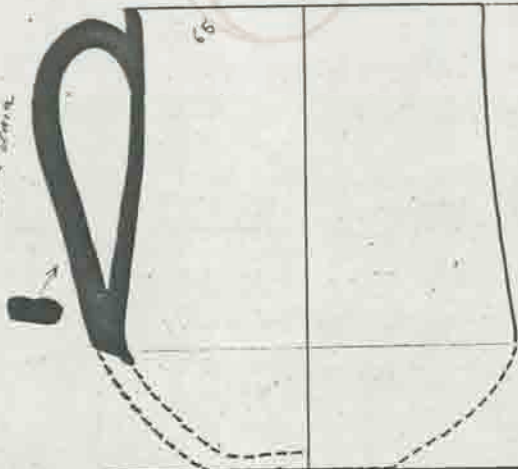


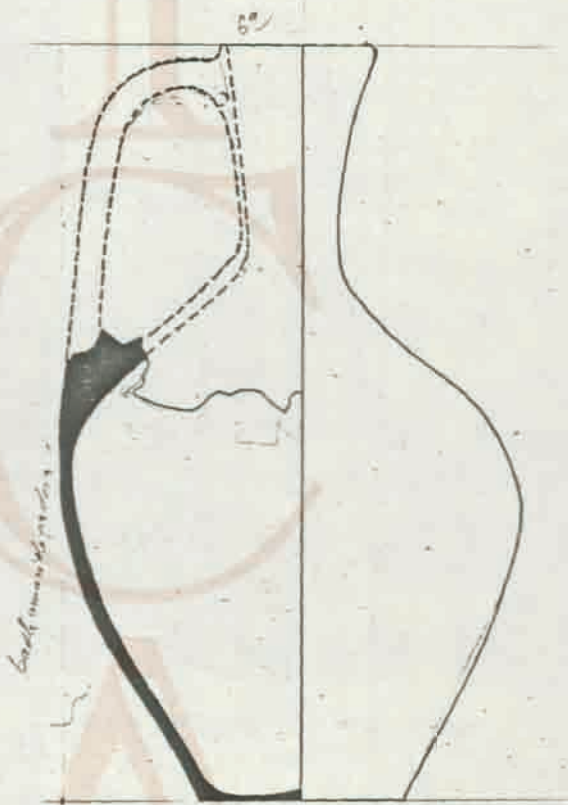
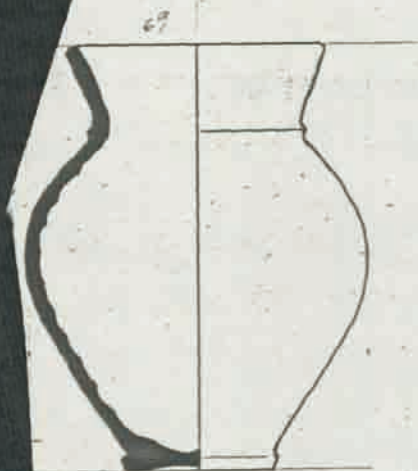
Armillas del Casaca

169
Armillas

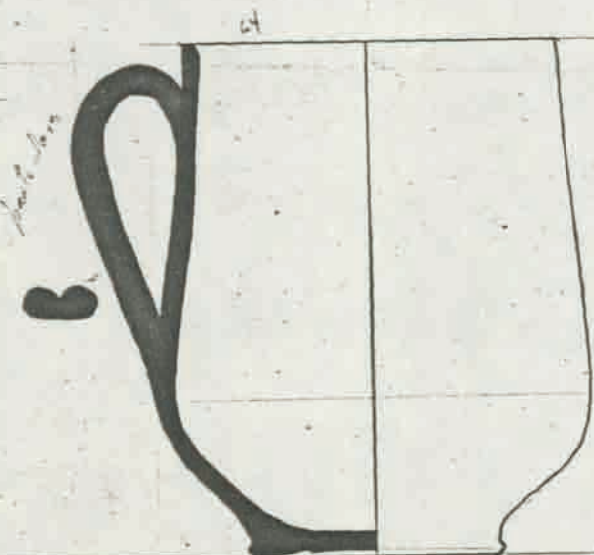


170
Armillas



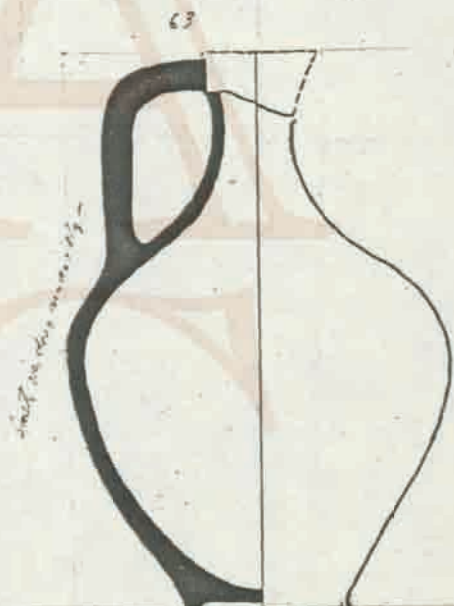


Canal interior del hornillo

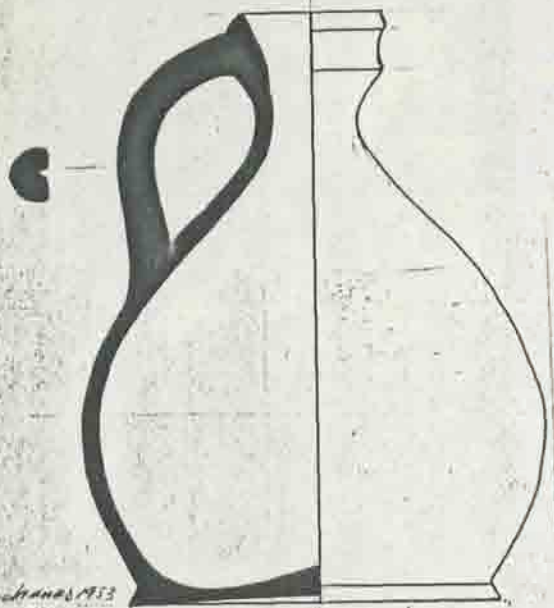


Hornillo

64



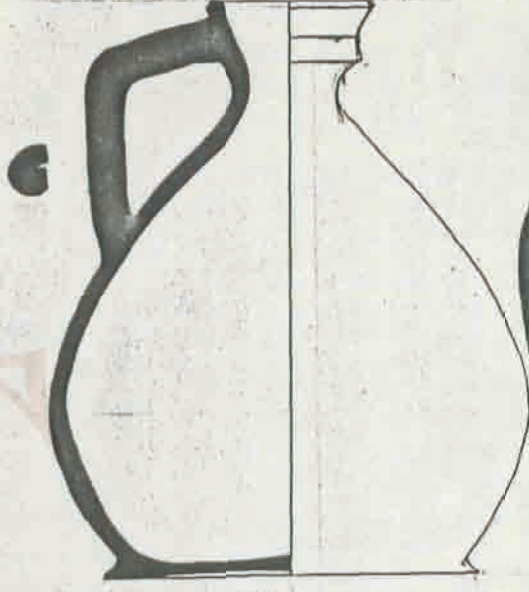
Hornillo



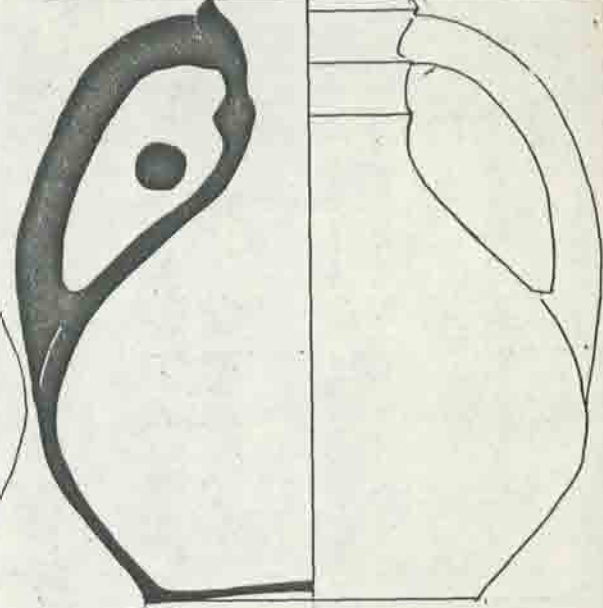
Merschmann 1953
S. 1120 -



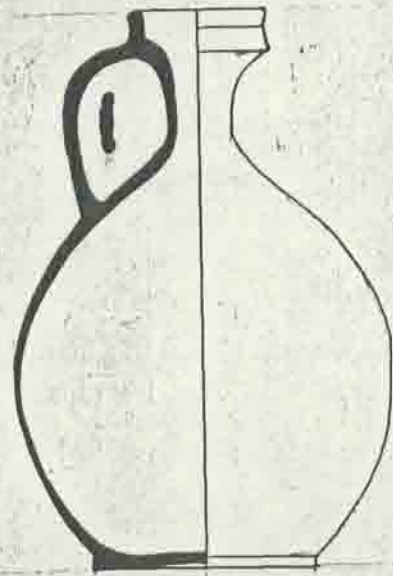
Merschmann
S. 1121



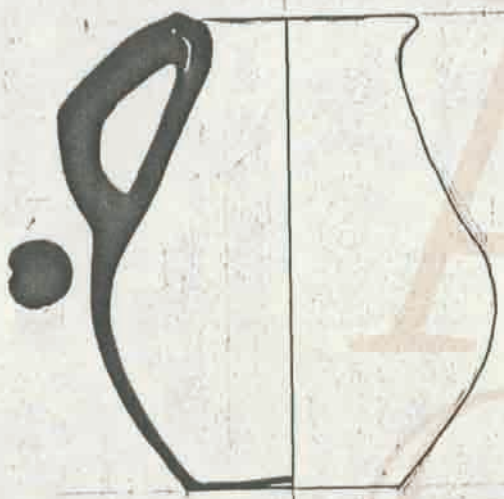
Merschmann S. 1122 P.



Merschmann S. 1125 -



Merschmann 1953
S. 1124 -



Merschmann S. 1126



Merschmann

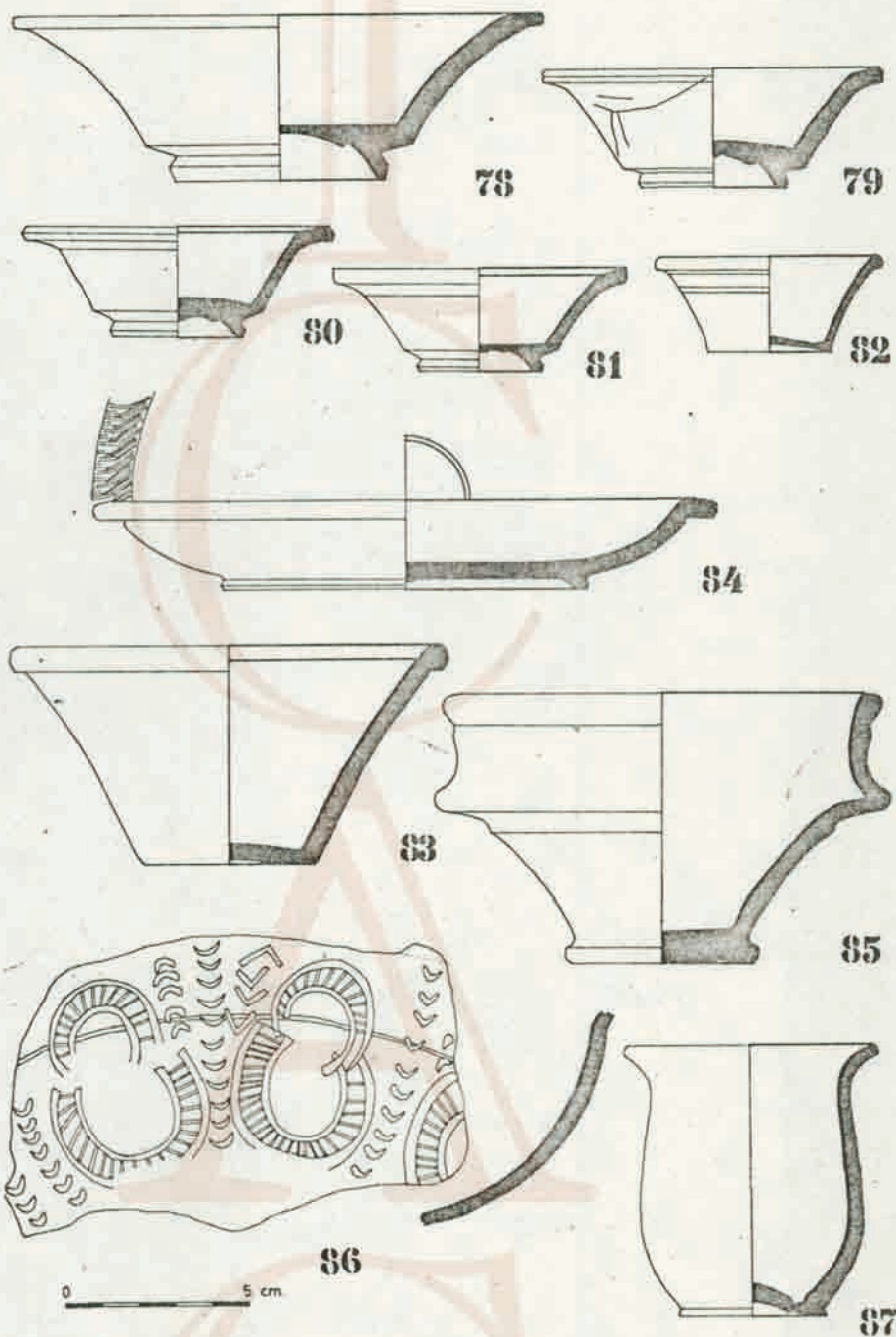


Lámina XII.— Museo Arqueológico de Palencia.

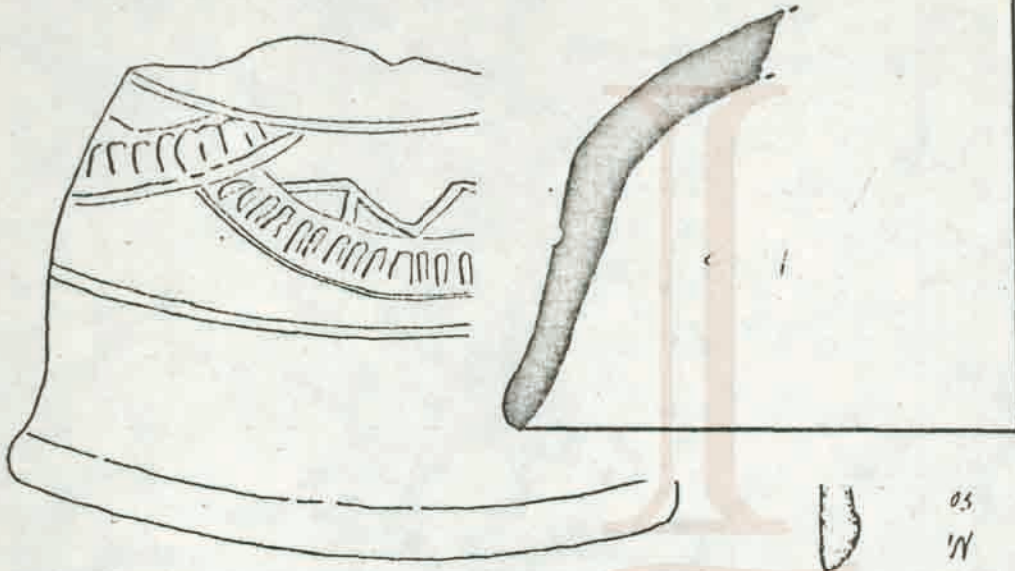
f. 238. — Museo Palencia N.º Inv. 675. In procedencia

LOPEZ RODRIGUEZ, JOSE Ramón
 Terra sigillata de Palencia en los museos Arqueológico de Palencia y
 Arqueológico Nacional.

~~Por~~ Publicaciones de la Institución "Tierra Tiella de Meneses"
 Dip. Provincial. Palencia 1987

f. 187-266. XXIV Tomo.

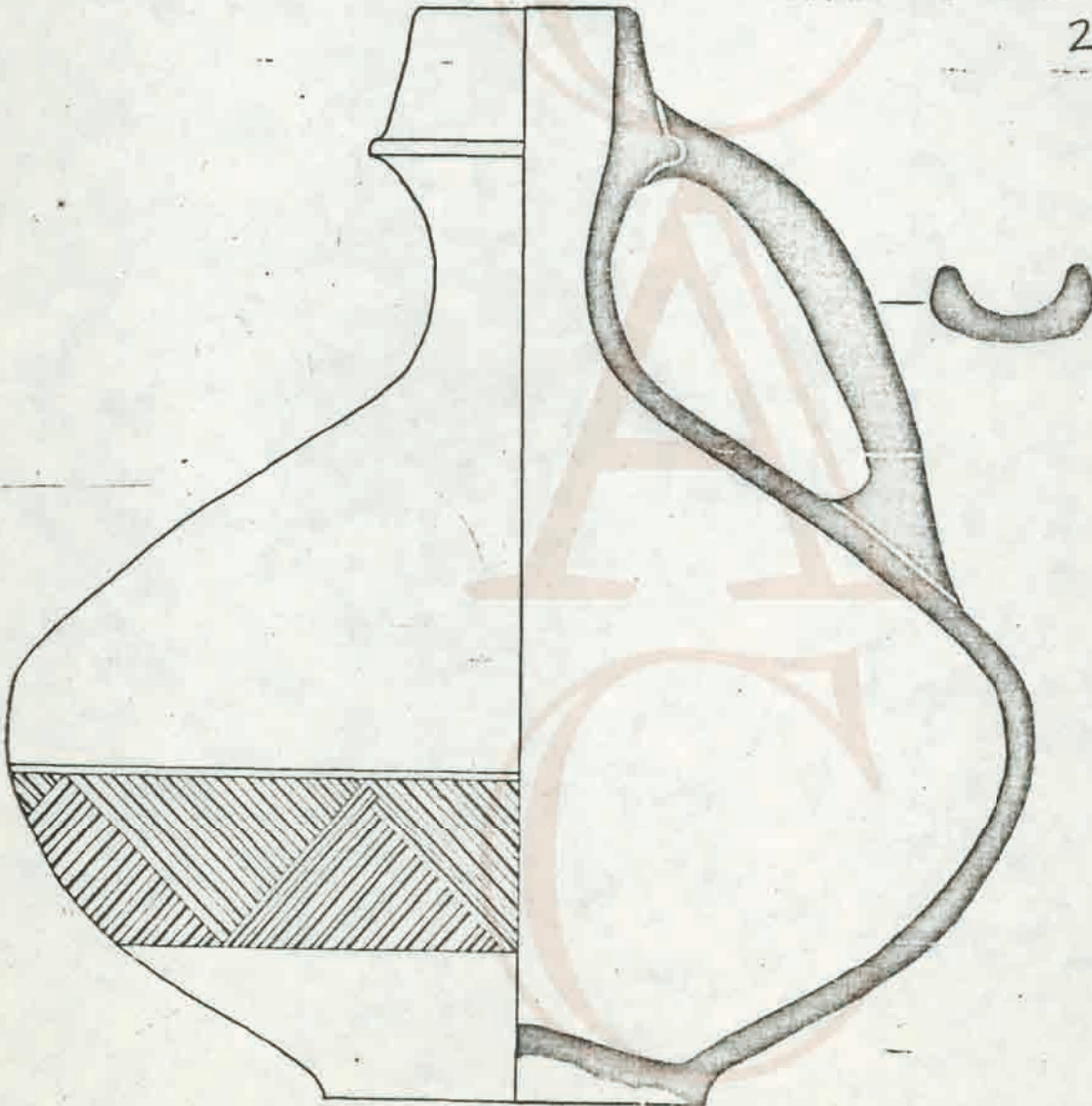
ARUNA (Alam)



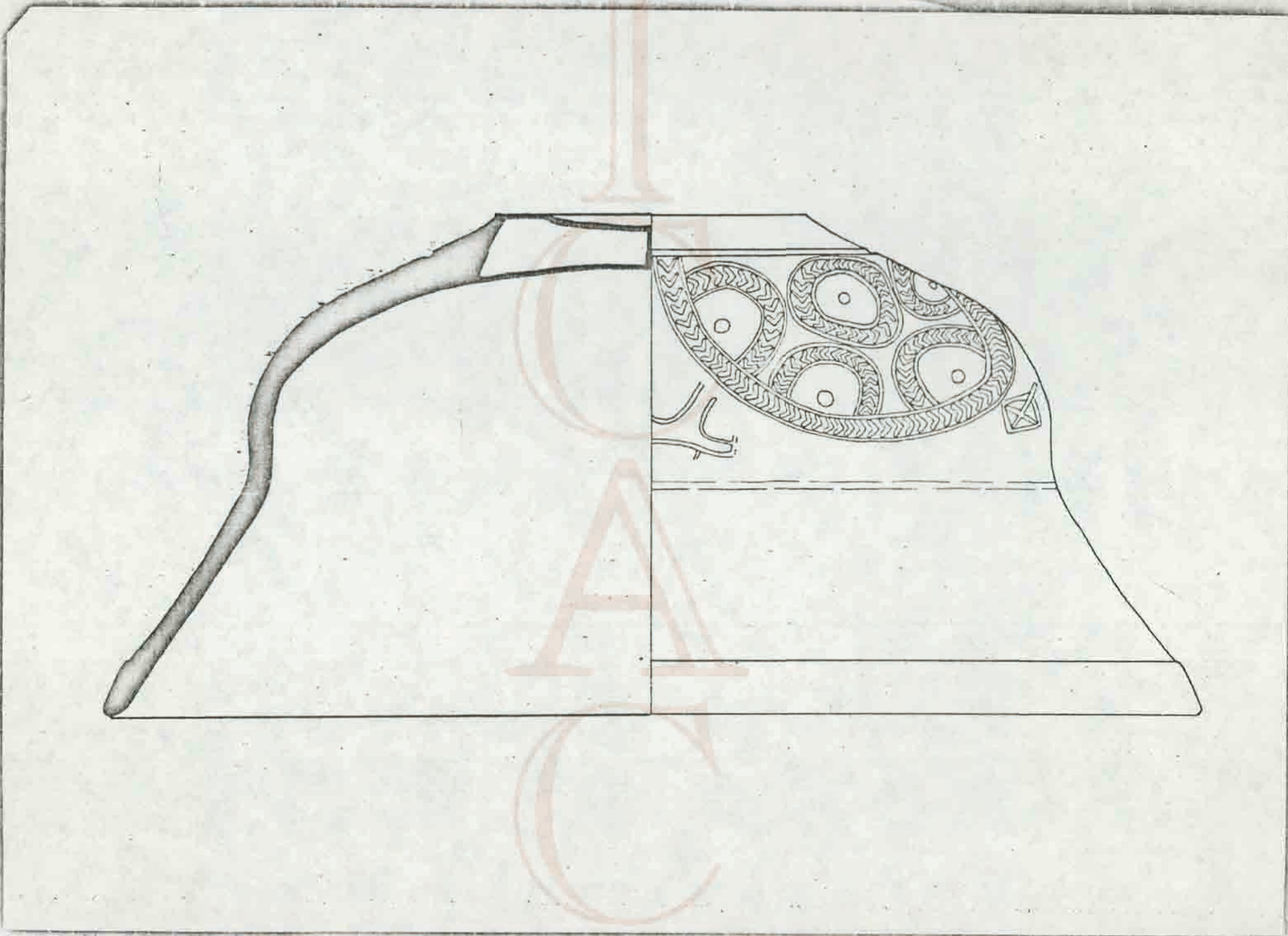
M.
50

456

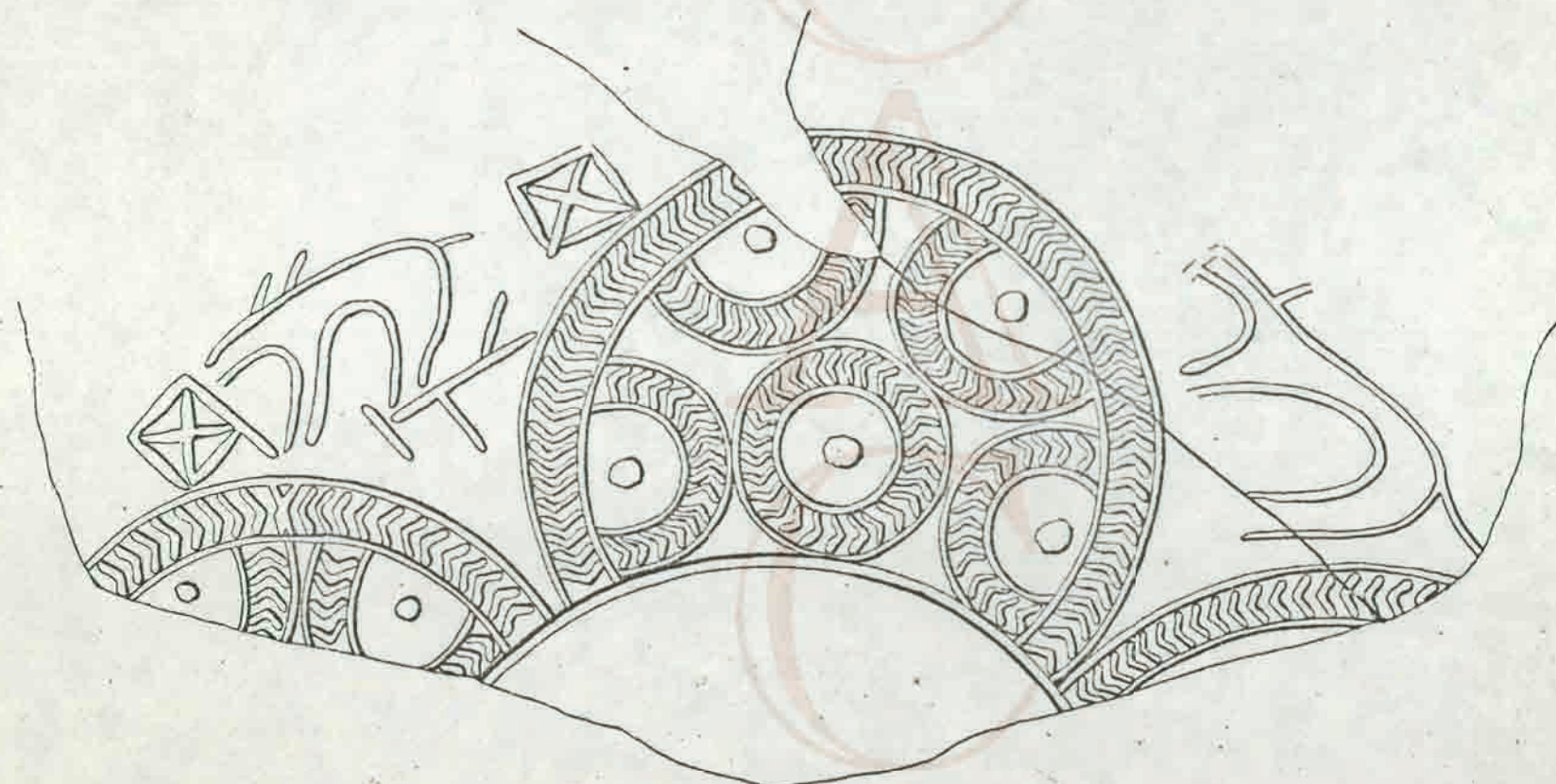
2



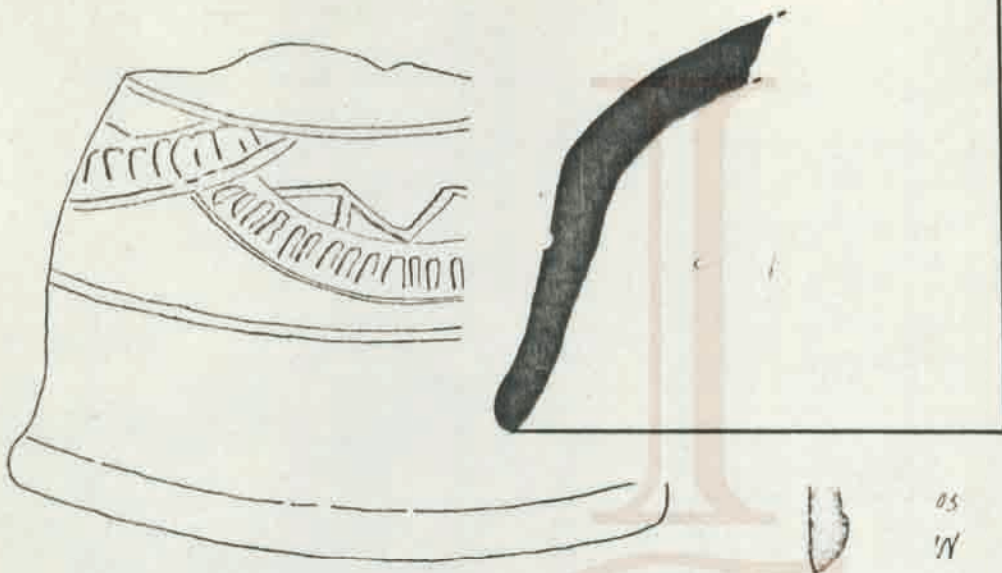
NECROPOLIS DE SIMANCA



Musee de Trévis



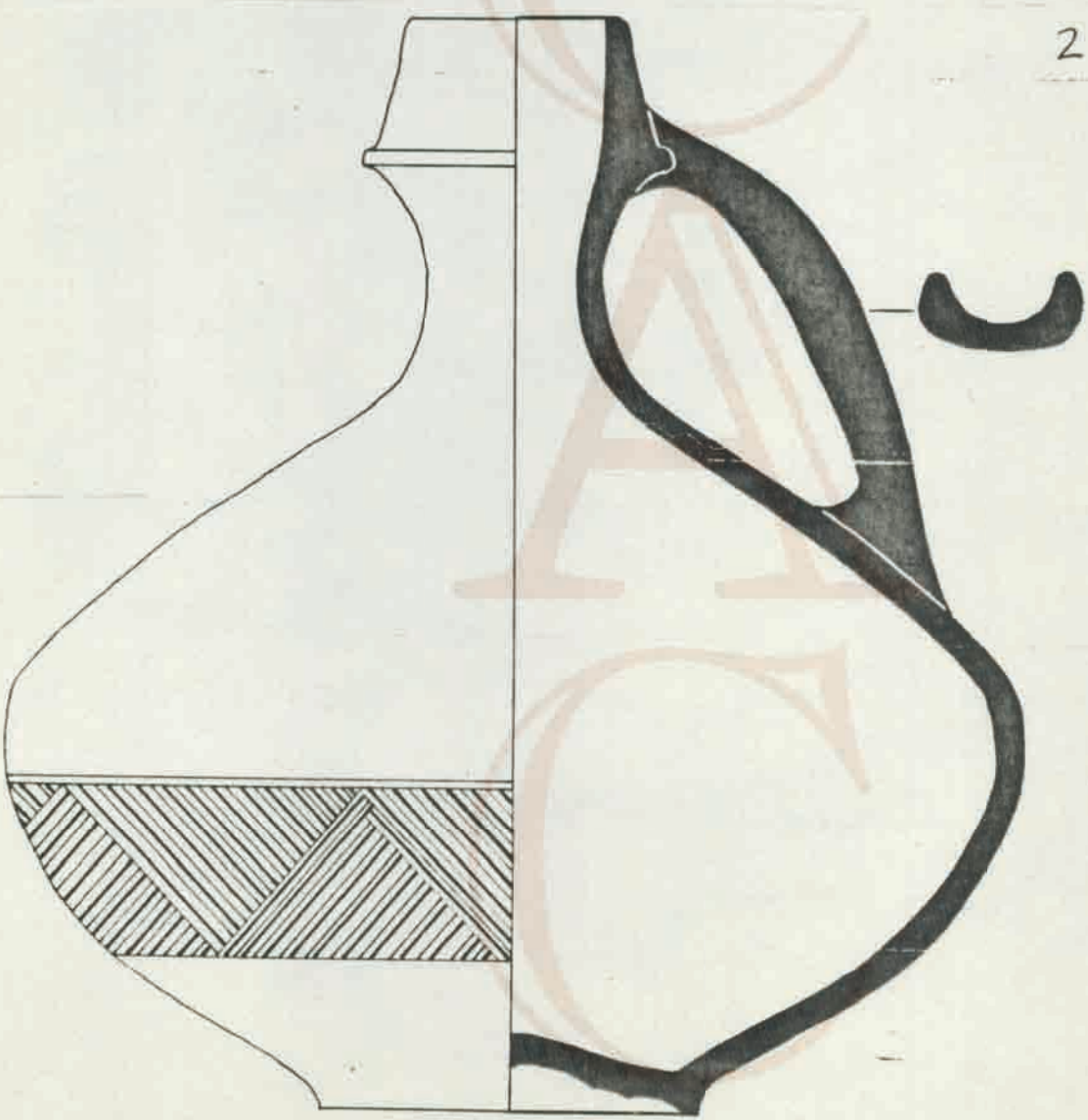
JAVINA (Palace)



M.
05

456

2



NECROPOLIS DE SIMANCA S