

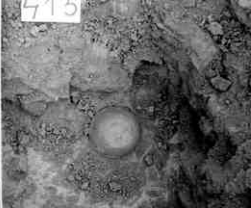


1950

1951



715



415

2

1000 1000 1000 1000 1000

1000





430





430





459

439











1567



597



447

447

447









1269

449











1955-1956

1955



454

A black and white photograph of a rock specimen. The rock is light-colored and has a rough, crystalline texture. It is broken into several pieces, with a prominent crack running vertically through the center. A small, white rectangular label with the number '454' is placed on the upper part of the rock. The background is dark and appears to be a rough, uneven surface.



205











L67





467





1951







1070



470